

STONE TRAP PRE-WASH SYSTEM

REMOVE HEAVY DEBRIS AND GIVE PRODUCT AN INITIAL WASH

LAKWOOD PROCESS MACHINERY Stone Trap Pre-Wash System

- **Easy-to-clean design**
- **Compact size**
- **Micro-slatted hyrdo-sieve screen effectively filters water, allowing it to recirculate**



Lakewood's Stone Trap Pre-Wash System is an ideal component for small vegetable and berry packing lines. It effectively washes product and removes heavy debris such as stones, nuts, bolts, etc. from the flow of product.

Water is pumped over the surface of the flume pan, and the product is conveyed into the water flow. The product is rinsed and carried by the water flume to the main conveyor, while heavier objects are trapped in the collection troughs for later removal. The water continues through a hyrdo-sieve where it is filtered and then recirculated.

Stone Trap Pre-Washer Capacities

Width	Capacity (lbs per hour)
33"	Approximately 8,000 lbs per hour
42"	Approximately 12,000 lbs per hour

(Heavy debris is collected in the 'Stone Traps' shown here)

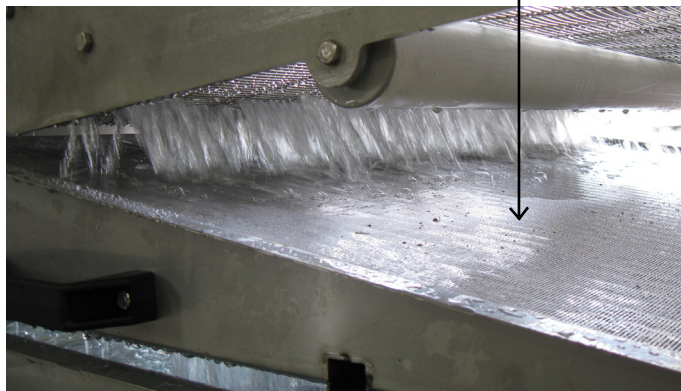


Stone Trap Pre-Washer Options

Stone Trap Pre-Washer Options
Sanitizer System (Pumps chlorinated solution through the water for product washing)
Exit Conveyor Mounting Brackets for Water Stripper
Infeed hopper for stand-alone washing (shown above)
* Custom design for specific applications

** Custom designs for any application will likely raise the cost of the machine due to the added research & design, materials, and engineering costs required to make the necessary adjustments on the machine.*

(The hyrdo-sieve screen filters out debris & recirculates water)



(Infeed Hopper option shown here)

